

Arduino Mega 2560 (and compatible) mounting plate

Version 4

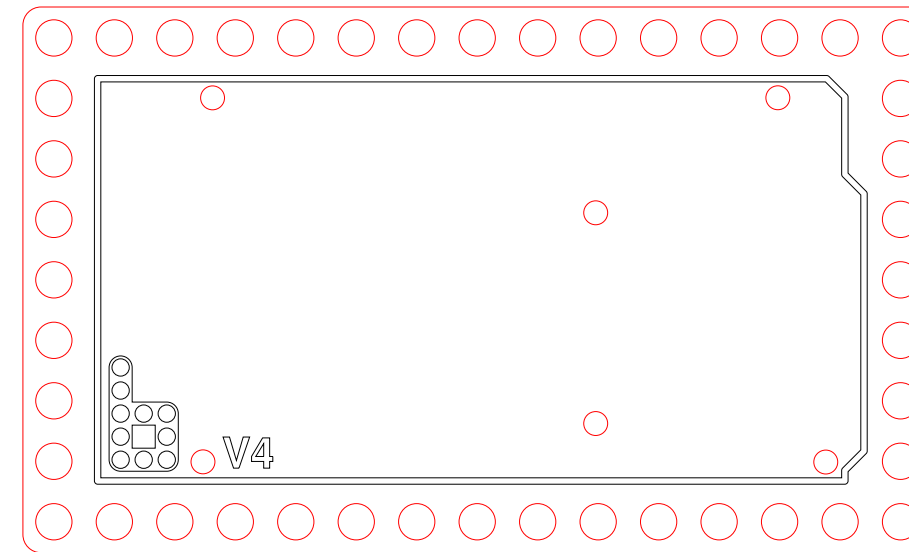
#000000 = Vector engrave (high speed)

#FF0000 = Vector cut

Last updated: May 9, 2013

Created by Matthew Beckler and Adam Wolf for Wayne and Layne, LLC

<http://www.wayneandlayne.com/bricktronics/>



1" square for
scaling factor
confirmation

This work is licensed under a Creative Commons Attribution-ShareAlike 3.0 Unported License

<http://creativecommons.org/licenses/by-sa/3.0/>